



FOR SPECIFIC MODELS ONLY

U-Neel[®]
SUBMERSIBLE PUMPS

PRICE LIST / PERFORMANCE TABLE OF ENERGY EFFICIENT (STAR RATING) SUBMERSIBLE PUMP SET AT 415V, 3PHASE, 50 Hz, A.C. SUPPLY (2900 RPM)

SUITABLE FOR 150 mm (6") OR ABOVE DIA. BOREWELL

Model - Type 5K-30

RADIAL FLOW

Max. Out Side Dia. 142 mm

Sr. No.	Pump Type & Stage	KW	H.P.	Outlet Size mm	ISI Mark	STAR RATING	QM ³ /HR	0	6.3	7.2	7.56	8.1	11.7	13.8
							QLPM	0	105	120	126	135	195	230
							H/Stage	9.5	8.0	6.6	6.0	5.75	4.5	3.0
1	5K-30/10	2.2	3	50	ISI		TOTAL HEAD IN METRES	95	80	66	60	58	45	30
2	5K-30/11	2.2	3	50	ISI			104	88	73	66	63	49.5	33
3	5K-30/12	3	4	50	ISI			114	96	79.5	72	69	54	36
4	5K-30/13	3	4	50	ISI			124	104	86	78	75	58.5	39
5	5K-30/14	3	4	50	ISI			133	112	92.5	84	81	63	42
6	5K-30/15	3.7	5	50	ISI			143	120	99	90	86	67.5	45
7	5K-30/16	3.7	5	50	ISI			152	128	106	96	92	72	48
8	5K-30/17	3.7	5	50	ISI			162	136	112.5	102	98	76.5	51
9	5K-30/18	4.5	6	50	ISI			171	144	119	108	104	81	54
10	5K-30/19	4.5	6	50	ISI			181	152	125.5	114	109	85.5	57
11	5K-30/20	4.5	6	50	ISI			190	160	132	120	115	90	60
12	5K-30/21	4.5	6	50	ISI			200	168	139	126	121	94.5	63
13	5K-30/22	5.5	7.5	50	ISI			209	176	145.5	132	127	99	66
14	5K-30/23	5.5	7.5	50	ISI			219	184	152	138	132	103.5	69
15	5K-30/24	5.5	7.5	50	ISI			228	192	158.5	144	138	108	72
16	5K-30/25	5.5	7.5	50	ISI			238	200	165	150	144	112.5	75
17	5K-30/26	5.5	7.5	50	ISI			247	208	172	156	150	117	78
18	5K-30/27	5.5	7.5	50	ISI			257	216	178.5	162	155	121.5	81
19	5K-30/28	5.5	7.5	50	ISI			266	224	185	168	161	126	84
20	5K-30/29	7.5	10	50	ISI			276	232	191.5	174	167	130.5	87
21	5K-30/30	7.5	10	50	ISI			285	240	198	180	173	135	90





PRICE LIST / PERFORMANCE TABLE OF ENERGY EFFICIENT (STAR RATING) SUBMERSIBLE PUMP SET AT 415V, 3PHASE, 50 Hz, A.C. SUPPLY (2900 RPM)

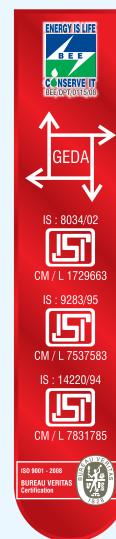
SUITABLE FOR 150 mm (6") OR ABOVE DIA. BOREWELL

Model - Type 5K-40

RADIAL FLOW

Max. Out Side Dia. 142 mm

Sr. No.	Pump Type & Stage	KW	H.P.	Outlet Size mm	ISI Mark	STAR RATING	QM ³ /HR	0	7.8	8.7	9	9.6	12.9	15.6
							QLPM	0	130	145	150	160	215	260
							H/Stage	9.5	8.5	7.7	7	6.7	5.25	3
1	5K-40/7	2.2	3	50	ISI		TOTAL HEAD IN METRES	67	60	54	49	47	36.5	21
2	5K-40/8	2.2	3	50	ISI			76	68	62	56	54	42	24
3	5K-40/9	3	4	50	ISI			86	77	69.5	63	60	47	27
4	5K-40/10	3	4	50	ISI			95	85	77	70	67	52.5	30
5	5K-40/11	3	4	50	ISI			104	93	85	77	74	57.5	33
6	5K-40/12	3.7	5	50	ISI			114	102	92.5	84	81	63	36
7	5K-40/13	3.7	5	50	ISI			123	111	100.5	91	87	68	39
8	5K-40/14	4.5	6	50	ISI			133	119	108	98	94	73.5	42
9	5K-40/15	4.5	6	50	ISI			143	128	115.5	105	101	78.5	45
10	5K-40/16	4.5	6	50	ISI			152	136	123.5	112	107	84	48
11	5K-40/17	5.5	7.5	50	ISI			162	145	131	119	114	89	51
12	5K-40/18	5.5	7.5	50	ISI			171	153	139	126	121	94.5	54
13	5K-40/19	5.5	7.5	50	ISI			181	162	146.5	133	127	99.5	57
14	5K-40/20	5.5	7.5	50	ISI			190	170	154	140	134	105	60
15	5K-40/21	5.5	7.5	50	ISI			200	178	162	147	141	110	63
16	5K-40/22	7.5	10	50	ISI			209	187	169.5	154	148	115.5	66
17	5K-40/23	7.5	10	50	ISI			219	196	177.5	161	154	120.5	69
18	5K-40/24	7.5	10	50	ISI			228	204	185	168	161	126	72
19	5K-40/25	7.5	10	50	ISI			238	213	192.5	175	168	131	75
20	5K-40/26	7.5	10	50	ISI			247	221	200.5	182	174	136.5	78
21	5K-40/27	7.5	10	50	ISI			257	230	208	189	181	141.5	81
22	5K-40/28	9.3	12.5	50	ISI			266	238	216	196	188	147	84
23	5K-40/29	9.3	12.5	50	ISI			276	247	223.5	203	195	152	87
24	5K-40/30	9.3	12.5	50	ISI			285	255	231	210	201	157.5	90





FOR SPECIFIC MODELS ONLY

U-Neel[®]
SUBMERSIBLE PUMPS

PRICE LIST / PERFORMANCE TABLE OF ENERGY EFFICIENT (STAR RATING) SUBMERSIBLE PUMP SET AT 415V, 3PHASE, 50 Hz, A.C. SUPPLY (2900 RPM)

SUITABLE FOR 150 mm (6") OR ABOVE DIA. BOREWELL

Model - Type 5K-50

RADIAL FLOW

Max. Out Side Dia. 142 mm

Sr. No.	Pump Type & Stage	KW	H.P.	Outlet Size mm	ISI Mark	STAR RATING	QM ³ /HR	0	9	9.9	10.8	11.7	15	19.2
							QLPM	0	150	165	180	195	250	320
							H/Stage	10.0	9.0	8.4	7.6	7.25	5.7	3.0
1	5K-50/6	2.2	3	50	ISI		60	54	50.5	45.6	43	34	18	
2	5K-50/7	3	4	50	ISI		70	63	59	53.5	51	40	21	
3	5K-50/8	3	4	50	ISI		80	72	67	60.8	58	45	24	
4	5K-50/9	3	4	50	ISI		90	81	75.5	68.5	65	51	27	
5	5K-50/10	3.7	5	50	ISI		100	90	84	76	73	57	30	
6	5K-50/11	3.7	5	50	ISI		110	99	92.5	84	80	63	33	
7	5K-50/12	4.5	6	50	ISI		120	108	100.5	91	87	68	36	
8	5K-50/13	4.5	6	50	ISI		130	117	109	99	94	74	39	
9	5K-50/14	5.5	7.5	50	ISI		140	126	117	106	102	79	42	
10	5K-50/15	5.5	7.5	50	ISI		150	135	126	114	109	85	45	
11	5K-50/16	5.5	7.5	50	ISI		160	144	134.5	122	116	91.5	48	
12	5K-50/17	5.5	7.5	50	ISI		170	153	142.5	129.5	123	97	51	
13	5K-50/18	7.5	10	50	ISI		180	162	151	137	131	102.5	54	
14	5K-50/19	7.5	10	50	ISI		190	171	159	144.5	138	108	57	
15	5K-50/20	7.5	10	50	ISI		200	180	167.5	152	145	114	60	
16	5K-50/21	7.5	10	50	ISI		210	189	176	160	152	120	63	
17	5K-50/22	9.3	12.5	50	ISI		220	198	184.5	167.5	160	125.5	66	
18	5K-50/23	9.3	12.5	50	ISI		230	207	192.5	175	167	131	69	
19	5K-50/24	9.3	12.5	50	ISI		240	216	201	182.5	174	136.5	72	
20	5K-50/25	9.3	12.5	50	ISI		250	225	209	190	181	142.5	75	
21	5K-50/26	9.3	12.5	50	ISI		260	234	218	198	189	148.5	78	
22	5K-50/27	11	15	50	ISI		270	243	226.5	205.5	196	154	81	
23	5K-50/28	11	15	50	ISI		280	252	234.5	213	203	159.5	84	
24	5K-50/29	11	15	50	ISI		290	261	243	220.5	210	165	87	
25	5K-50/30	11	15	50	ISI		300	270	251	228	218	171	90	

TOTAL HEAD IN METRES





PRICE LIST / PERFORMANCE TABLE OF ENERGY EFFICIENT (STAR RATING) SUBMERSIBLE PUMP SET AT 415V, 3PHASE, 50 Hz, A.C. SUPPLY (2900 RPM)

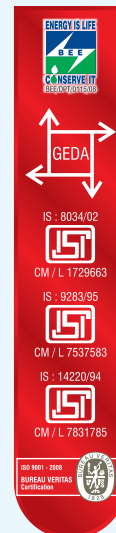
SUITABLE FOR 150 mm (6") OR ABOVE DIA. BOREWELL

Model - Type 5K-60

RADIAL FLOW

Max. Out Side Dia. 142 mm

Sr. No.	Pump Type & Stage	KW	H.P.	Outlet Size mm	ISI Mark	STAR RATING	QM ³ /HR	0	11.4	12.3	12.6	13.5	17.1	21.6
							QLPM	0	190	205	210	225	285	360
							H/Stage	11.0	9.5	8.8	8.0	7.7	6.0	3.0
1	5K-60/7	3	4	50	ISI		TOTAL HEAD IN METRES	77	67	62	56	54	42	21
2	5K-60/8	3.7	5	50	ISI			88	76	70.5	64	62	48	24
3	5K-60/9	3.7	5	50	ISI			99	85	79.5	72	69	54	27
4	5K-60/10	4.5	6	50	ISI			110	95	88	80	77	60	30
5	5K-60/11	4.5	6	50	ISI			121	104	97	88	85	66	33
6	5K-60/12	5.5	7.5	50	ISI			132	114	106	96	93	72	36
7	5K-60/13	5.5	7.5	50	ISI			143	124	114.5	104	100	78	39
8	5K-60/14	5.5	7.5	50	ISI			154	133	123.5	112	108	84	42
9	5K-60/15	7.5	10	50	ISI			165	143	132	120	116	90	45
10	5K-60/16	7.5	10	50	ISI			176	152	141	128	123	96	48
11	5K-60/17	7.5	10	50	ISI			187	162	150	136	131	102	51
12	5K-60/18	7.5	10	50	ISI			198	171	158.5	144	139	108	54
13	5K-60/19	9.3	12.5	50	ISI			209	181	167.5	152	146	114	57
14	5K-60/20	9.3	12.5	50	ISI			220	190	176	160	154	120	60
15	5K-60/21	9.3	12.5	50	ISI			231	200	185	168	162	126	63
16	5K-60/22	9.3	12.5	50	ISI			242	209	194	176	170	132	66
17	5K-60/23	11	15	50	ISI			253	219	202.5	184	177	138	69
18	5K-60/24	11	15	50	ISI			264	228	211.5	192	185	144	72
19	5K-60/25	11	15	50	ISI			275	238	220	200	193	150	75
20	5K-60/26	13	17.5	50	ISI			286	247	229	208	200	156	78
21	5K-60/27	13	17.5	50	ISI			297	257	238	216	208	162	81
22	5K-60/28	13	17.5	50	ISI			308	266	246.5	224	216	168	84
23	5K-60/29	13	17.5	50	ISI			319	276	255.5	232	223	174	87
24	5K-60/30	15	20	50	ISI			330	285	264	240	231	180	90
25	5K-60/31	15	20	50	ISI			341	295	273	248	239	186	93
26	5K-60/32	15	20	50	ISI			352	304	282	256	247	192	96





PRICE LIST / PERFORMANCE TABLE OF ENERGY EFFICIENT (STAR RATING) SUBMERSIBLE PUMP SET AT 415V, 3PHASE, 50 Hz, A.C. SUPPLY (2900 RPM)

SUITABLE FOR 150 mm (6") OR ABOVE DIA. BOREWELL

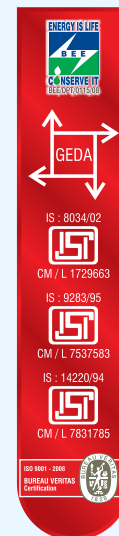
Model - Type 5K-70

RADIAL FLOW

Max. Out Side Dia. 142 mm

Sr. No.	Pump Type & Stage	KW	H.P.	Outlet Size mm	ISI Mark	STAR RATING	QM ³ /HR	0	10.2	12	14.4	15.6	18.6	24
							QLPM	0	170	200	240	260	310	400
							H/Stage	11.25	10.0	9.35	8.5	8.15	6.35	3.0
1	5K-70/4	2.2	3	50	ISI		45	40	37.5	34	33	25.5	12	
2	5K-70/5	3	4	50	ISI		56	50	47	42.5	41	31.5	15	
3	5K-70/6	3	4	50	ISI		67	60	56.5	51	49	38	18	
4	5K-70/7	3.7	5	50	ISI		79	70	65.5	59.5	57	44.5	21	
5	5K-70/8	4.5	6	50	ISI		90	80	75	68	65	51	24	
6	5K-70/9	4.5	6	50	ISI		101	90	84.5	76.5	73	57	27	
7	5K-70/10	5.5	7.5	50	ISI		112	100	93.5	85	82	63.5	30	
8	5K-70/11	5.5	7.5	50	ISI		124	110	103	93.5	90	70	33	
9	5K-70/12	5.5	7.5	50	ISI		135	120	112.5	102	98	76.5	36	
10	5K-70/13	7.5	10	50	ISI		146	130	122	110.5	106	82.5	39	
11	5K-70/14	7.5	10	50	ISI		158	140	131	119	114	89	42	
12	5K-70/15	7.5	10	50	ISI		169	150	141	128	122	96	45	
13	5K-70/16	7.5	10	50	ISI		180	160	150	136	130	102	48	
14	5K-70/17	9.3	12.5	50	ISI		191	170	159	144.5	139	108	51	
15	5K-70/18	9.3	12.5	50	ISI		203	180	168.5	153	147	114.5	54	
16	5K-70/19	9.3	12.5	50	ISI		214	190	178	161.5	155	121	57	
17	5K-70/20	11	15	50	ISI		225	200	187	170	163	127.5	60	
18	5K-70/21	11	15	50	ISI		236	210	196.5	178.5	171	133.5	63	
19	5K-70/22	11	15	50	ISI		248	220	206	187	179	140	66	
20	5K-70/23	11	15	50	ISI		259	230	215.5	195.5	188	146.5	69	
21	5K-70/24	13	17.5	50	ISI		270	240	224.5	204	196	153	72	
22	5K-70/25	13	17.5	50	ISI		281	250	234	212.5	204	159	75	
23	5K-70/26	13	17.5	50	ISI		293	260	243.5	221	212	165.5	78	
24	5K-70/27	15	20	50	ISI		304	270	252.5	229.5	220	172	81	
25	5K-70/28	15	20	50	ISI		315	280	262	238	228	178.5	84	
26	5K-70/29	15	20	50	ISI		326	290	271.5	246.5	236	184.5	87	
27	5K-70/30	15	20	50	ISI		338	300	280.5	255	245	191	90	

TOTAL HEAD IN METRES





U-Neel®
SUBMERSIBLE PUMPS

PRICE LIST / PERFORMANCE TABLE OF ENERGY EFFICIENT (STAR RATING) SUBMERSIBLE PUMP SET AT 415V, 3PHASE, 50 Hz, A.C. SUPPLY (2900 RPM)

SUITABLE FOR 150 mm (6") OR ABOVE DIA. BOREWELL

Model - Type 5K-80

RADIAL FLOW

Max. Out Side Dia. 142 mm

Sr. No.	Pump Type & Stage	KW	H.P.	Outlet Size mm	ISI Mark	STAR RATING	QM ³ /HR	10.8	14.8	15.1	16.2	21.6	26.4
							0	180	247	252	270	360	440
							QLPM	H/Stage	11.0	9.9	9.0	8.65	6.75
1	5K-80/4	2.2	3	50	ISI		49	44	40	36	35	27	12
2	5K-80/5	3	4	50	ISI		61	55	49.5	45	43	33.5	15
3	5K-80/6	3.7	5	50	ISI		74	66	59.5	54	52	40.5	18
4	5K-80/7	4.5	6	50	ISI		86	77	69.5	63	61	47	21
5	5K-80/8	4.5	6	50	ISI		98	88	79.5	72	69	54	24
6	5K-80/9	5.5	7.5	50	ISI		110	99	89.5	81	78	60.5	27
7	5K-80/10	5.5	7.5	50	ISI		123	110	99	90	87	67.5	30
8	5K-80/11	7.5	10	50	ISI		135	121	109	99	95	74	33
9	5K-80/12	7.5	10	50	ISI		147	132	119	108	104	81	36
10	5K-80/13	7.5	10	50	ISI		159	143	129	117	112	87.5	39
11	5K-80/14	9.3	12.5	50	ISI		172	154	139	126	121	94.5	42
12	5K-80/15	9.3	12.5	50	ISI		184	165	148.5	135	130	101	45
13	5K-80/16	9.3	12.5	50	ISI		196	176	158.5	144	139	108	48
14	5K-80/17	11	15	50	ISI		208	187	168.5	153	147	114.5	51
15	5K-80/18	11	15	50	ISI		221	198	178.5	162	156	121.5	54
16	5K-80/19	11	15	50	ISI		233	209	188.5	171	164	128	57
17	5K-80/20	13	17.5	50	ISI		245	220	198	180	173	135	60
18	5K-80/21	13	17.5	50	ISI		257	231	208	189	182	141.5	63
19	5K-80/22	13	17.5	50	ISI		270	242	218	198	190	148.5	66
20	5K-80/23	15	20	50	ISI		282	253	228	207	199	155	69
21	5K-80/24	15	20	50	ISI		294	264	238	216	208	162	72
22	5K-80/25	15	20	50	ISI		306	275	247.5	225	216	168.5	75

TOTAL HEAD IN METRES





PRICE LIST / PERFORMANCE TABLE OF ENERGY EFFICIENT (STAR RATING) SUBMERSIBLE PUMP SET AT 415V, 3PHASE, 50 Hz, A.C. SUPPLY (2900 RPM)

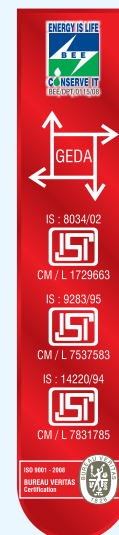
SUITABLE FOR 150 mm (6") OR ABOVE DIA. BOREWELL

Model - Type 5K-100

RADIAL FLOW

Max. Out Side Dia. 142 mm

Sr. No.	Pump Type & Stage	KW	H.P.	Outlet Size mm	ISI Mark	STAR RATING	QM ³ /HR	0	14.4	15.6	16.2	17.4	23.1	28.8
							QLPM	0	240	260	270	290	385	480
							H/Stage	12.25	11.0	10.6	9.6	9.2	7.2	3.0
1	5K-100/3	2.2	3	50	ISI		TOTAL HEAD IN METRES	37	33	32	29	28	21.5	9
2	5K-100/4	3	4	50	ISI			49	44	42.5	38.5	37	28.5	12
3	5K-100/5	3.7	5	50	ISI			61	55	53	48	46	36	15
4	5K-100/6	4.5	6	50	ISI			74	66	64	58	55	43.5	18
5	5K-100/7	5.5	7.5	50	ISI			86	77	74.5	67.5	65	50.5	21
6	5K-100/8	5.5	7.5	50	ISI			98	88	85	77	74	57.5	24
7	5K-100/9	7.5	10	50	ISI			110	99	95.5	86.5	83	64.5	27
8	5K-100/10	7.5	10	50	ISI			123	110	106	96	92	72	30
9	5K-100/11	7.5	10	50	ISI			135	121	117	106	101	79.5	33
10	5K-100/12	9.3	12.5	50	ISI			147	132	127.5	115.5	111	86.5	36
11	5K-100/13	9.3	12.5	50	ISI			159	143	137.5	125	120	93.5	39
12	5K-100/14	11	15	50	ISI			172	154	148	134.5	129	100.5	42
13	5K-100/15	11	15	50	ISI			184	165	158.5	144	138	108	45
14	5K-100/16	11	15	50	ISI			196	176	169.5	154	147	115.5	48
15	5K-100/17	13	17.5	50	ISI			208	187	180	163.5	157	122.5	51
16	5K-100/18	13	17.5	50	ISI			221	198	190.5	173	166	129.5	54
17	5K-100/19	15	20	50	ISI			233	209	201	182.5	175	136.5	57
18	5K-100/20	15	20	50	ISI			245	220	211.5	192	184	144	60





PRICE LIST / PERFORMANCE TABLE OF ENERGY EFFICIENT (STAR RATING) SUBMERSIBLE PUMP SET AT 415V, 3PHASE, 50 Hz, A.C. SUPPLY (2900 RPM)

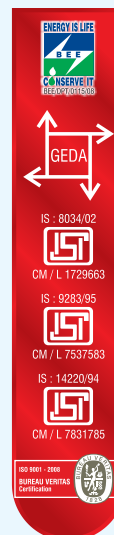
SUITABLE FOR 150 mm (6") OR ABOVE DIA. BOREWELL

Model - Type 5SB-10

Mixed Flow

Max. Out Side Dia. 142 mm

Sr. No.	Pump Type & Stage	KW	H.P.	Outlet Size mm	ISI Mark	STAR RATING	TOTAL HEAD IN METRES												
							QM ³ /HR	0	18	20.7	23.4	24.9	34.5	40.8					
							QLPM	0	300	345	390	415	575	680					
						H/Stage	10	9.5	8.8	8	7.7	6	3						
1	5SB-10/4	3	4	75	ISI		40	38	35.5	32	31	24	12						
2	5SB-10/5	3.7	5	75	ISI		50	48	44	40	39	30	15						
3	5SB-10/6	4.5	6	75	ISI		60	57	53	48	46	36	18						
4	5SB-10/7	5.5	7.5	75	ISI		70	67	62	56	54	42	21						
5	5SB-10/8	5.5	7.5	75	ISI		80	76	70.5	64	62	48	24						
6	5SB-10/9	7.5	10	75	ISI		90	86	79.5	72	69	54	27						
7	5SB-10/10	7.5	10	75	ISI		100	95	88	80	77	60	30						
8	5SB-10/11	7.5	10	75	ISI		110	104	97	88	85	66	33						
9	5SB-10/12	9.3	12.5	75	ISI		120	114	106	96	93	72	36						
10	5SB-10/13	9.3	12.5	75	ISI		130	124	114.5	104	100	78	39						
11	5SB-10/14	11	15	75	ISI		140	133	123.5	112	108	84	42						
12	5SB-10/15	11	15	75	ISI		150	143	132	120	116	90	45						
13	5SB-10/16	13	17.5	75	ISI		160	152	141	128	123	96	48						
14	5SB-10/17	13	17.5	75	ISI		170	162	150	136	131	102	51						
15	5SB-10/18	13	17.5	75	ISI		180	171	158.5	144	139	108	54						
16	5SB-10/19	15	20	75	ISI		190	181	167.5	152	146	114	57						
17	5SB-10/20	15	20	75	ISI		200	190	176	160	154	120	60						





FOR SPECIFIC MODELS ONLY

U-Neel[®]
SUBMERSIBLE PUMPS

PRICE LIST / PERFORMANCE TABLE OF ENERGY EFFICIENT (STAR RATING) SUBMERSIBLE PUMP SET AT 415V, 3PHASE, 50 Hz, A.C. SUPPLY (2900 RPM)

SUITABLE FOR 150 mm (6") OR ABOVE DIA. BOREWELL

Model - Type 5SB-12

Mixed Flow

Max. Out Side Dia. 142 mm

Sr. No.	Pump Type & Stage	KW	H.P.	Outlet Size mm	ISI Mark	STAR RATING	TOTAL HEAD IN METRES							
							QM ³ /HR	0	21	24.3	28.08	30.3	36.3	43.2
							QLPM	0	350	405	468	505	605	720
						H/Stage	10.5	9.8	9.1	8.25	7.9	6.2	3.0	
1	5SB-12/4	3.7	5	75	ISI		42	39	36.5	33	32	24.5	12	
2	5SB-12/5	4.5	6	75	ISI		53	49	46	41.5	39.5	31	15	
3	5SB-12/6	5.5	7.5	75	ISI		63	59	54.5	49.5	47	37	18	
4	5SB-12/7	5.5	7.5	75	ISI		74	69	64	58	55	43.5	21	
5	5SB-12/8	7.5	10	75	ISI		84	78	73	66	63	49.5	24	
6	5SB-12/9	7.5	10	75	ISI		95	88	82	74.5	71	55.5	27	
7	5SB-12/10	9.3	12.5	75	ISI		105	98	91	82.5	79	61.5	30	
8	5SB-12/11	9.3	12.5	75	ISI		116	108	100.5	91	87	68	33	
9	5SB-12/12	11	15	75	ISI		126	118	109	99	95	74	36	
10	5SB-12/13	11	15	75	ISI		137	128	118.5	107.5	103	80.5	39	
11	5SB-12/14	13	17.5	75	ISI		147	137	127.5	115.5	111	86.5	42	
12	5SB-12/15	13	17.5	75	ISI		158	147	136.5	124	119	93	45	
13	5SB-12/16	15	20	75	ISI		168	157	145.5	132	126	99	48	

Model - Type 5SB-15

Mixed Flow

Max. Out Side Dia. 142 mm

Sr. No.	Pump Type & Stage	KW	H.P.	Outlet Size mm	ISI Mark	STAR RATING	TOTAL HEAD IN METRES							
							QM ³ /HR	0	21.6	26.1	29.9	32.1	37.8	44.4
							QLPM	0	360	435	498	535	630	740
						H/Stage	11	10	9.35	8.5	8.15	6.35	3	
1	5SB-15/3	3.7	5	75	ISI		33	30	28.5	25.5	24.5	22.5	9	
2	5SB-15/4	4.5	6	75	ISI		44	40	37.5	34	33	25.5	12	
3	5SB-15/5	5.5	7.5	75	ISI		55	50	47	42.5	41	31.5	15	
4	5SB-15/6	7.5	10	75	ISI		66	60	56.5	51	49	38	18	
5	5SB-15/7	7.5	10	75	ISI		77	70	65.5	59.5	57	44.5	21	
6	5SB-15/8	9.3	12.5	75	ISI		88	80	75	68	65.5	51	24	
7	5SB-15/9	9.3	12.5	75	ISI		99	90	84.5	76.5	73.5	57	27	
8	5SB-15/10	11	15	75	ISI		110	100	93.5	85	81.5	63.5	30	
9	5SB-15/11	11	15	75	ISI		121	110	103	93.5	90	70	33	
10	5SB-15/12	13	17.5	75	ISI		132	120	112.5	102	98	76.5	36	
11	5SB-15/13	15	20	75	ISI		143	130	122	110.5	106	82.5	39	
12	5SB-15/14	15	20	75	ISI		154	140	131	119	114	89	42	

